

# A BETTER RED



Maywood Park City Council  
July 19, 2021



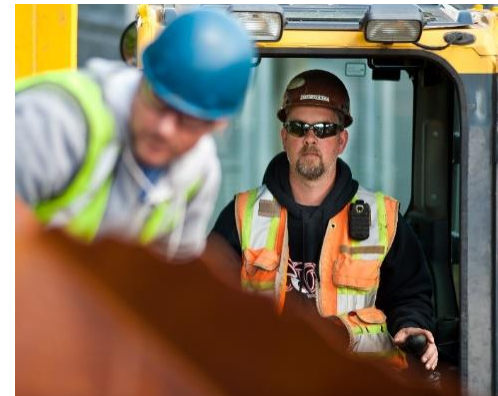
YouTube links:

English: <https://youtu.be/0udaEI7x9Y0>

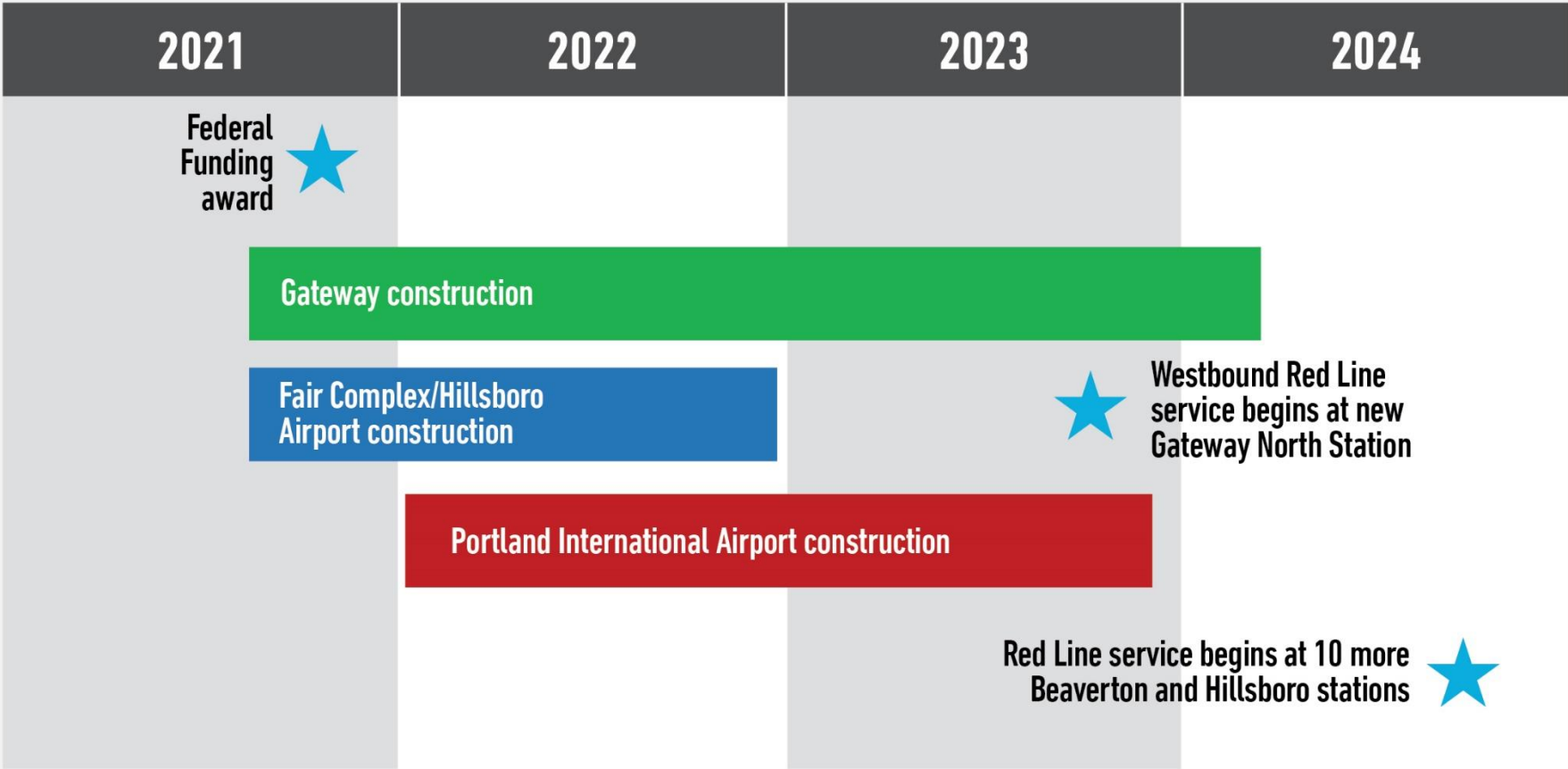
En Español: [https://youtu.be/0mlb\\_xuY\\_dl](https://youtu.be/0mlb_xuY_dl)

# Project Benefits

- Extends MAX Red Line west to serve 10 more stations
- Improves reliability for the entire MAX system
- Adds new multi-use paths at Gateway and PDX
- Creates up to 1,200 jobs
- Includes ambitious goals for Disadvantaged Business Enterprise (DBE) contracting
- Leverages about \$100 m federal funding



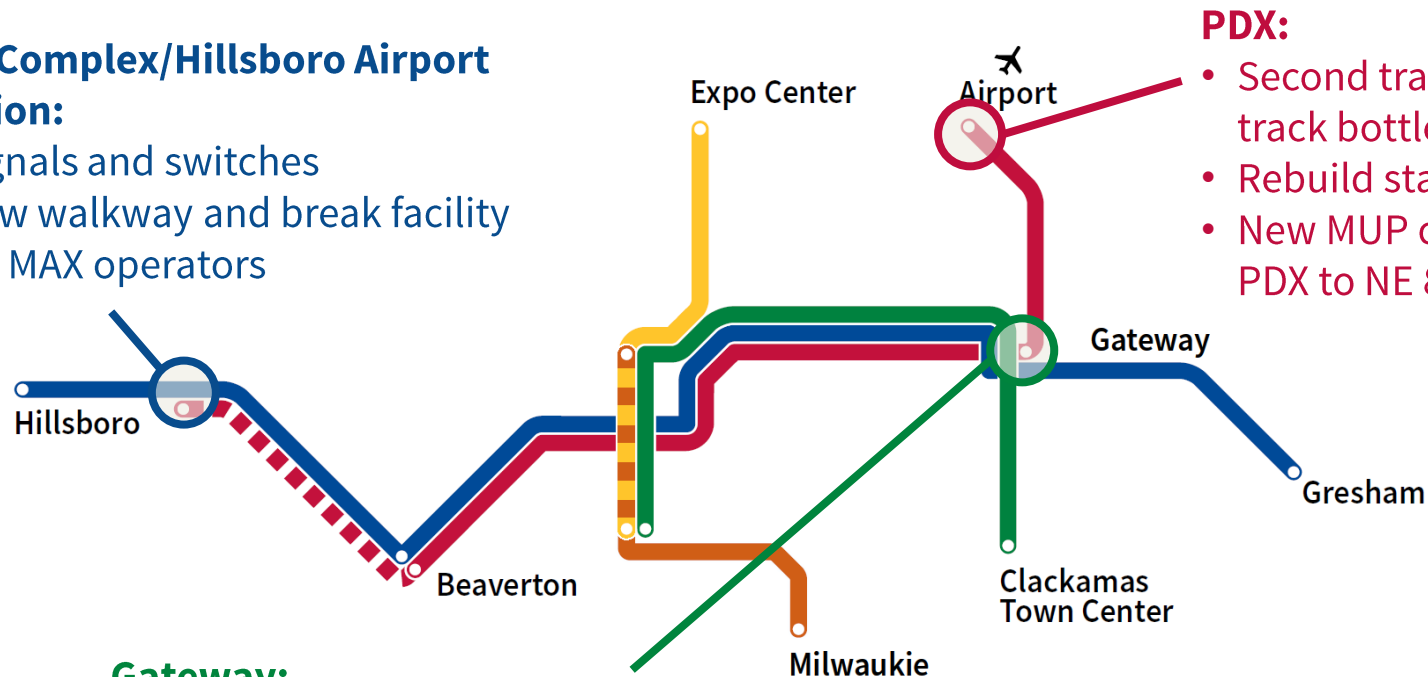
# ESTIMATED PROJECT SCHEDULE



# Construction Areas

## Fair Complex/Hillsboro Airport Station:

- Signals and switches
- New walkway and break facility for MAX operators



## PDX:

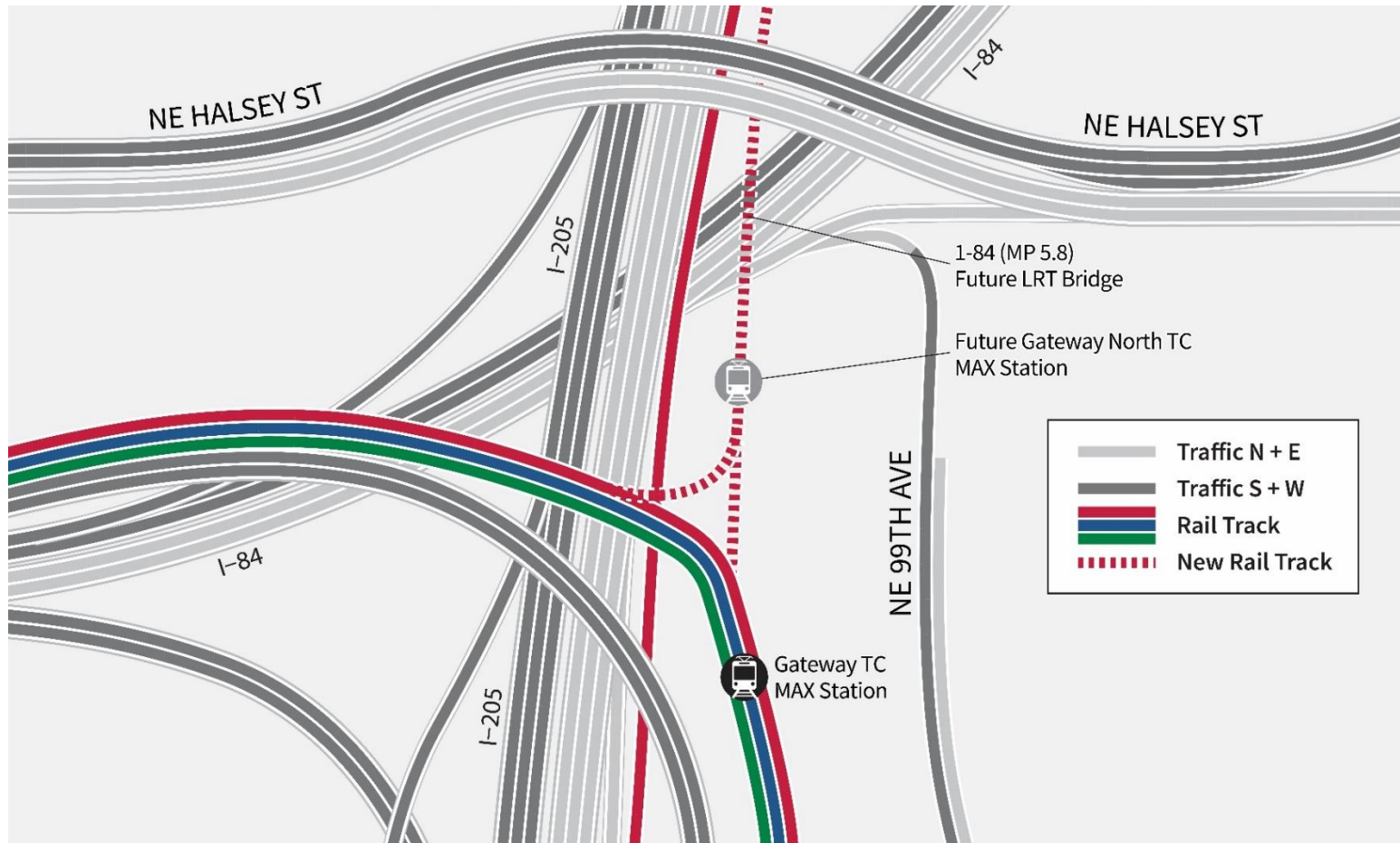
- Second track at single-track bottleneck
- Rebuild station platform
- New MUP connecting PDX to NE 82nd Way

## Gateway:

- Second track at single-track bottleneck
- Two bridges:
  - Over existing MAX track and I-205 MUP
  - Over I-84 and UPRR tracks, with new MUP to Gateway Green Park
- New station platform for Red Line trains heading toward City Center

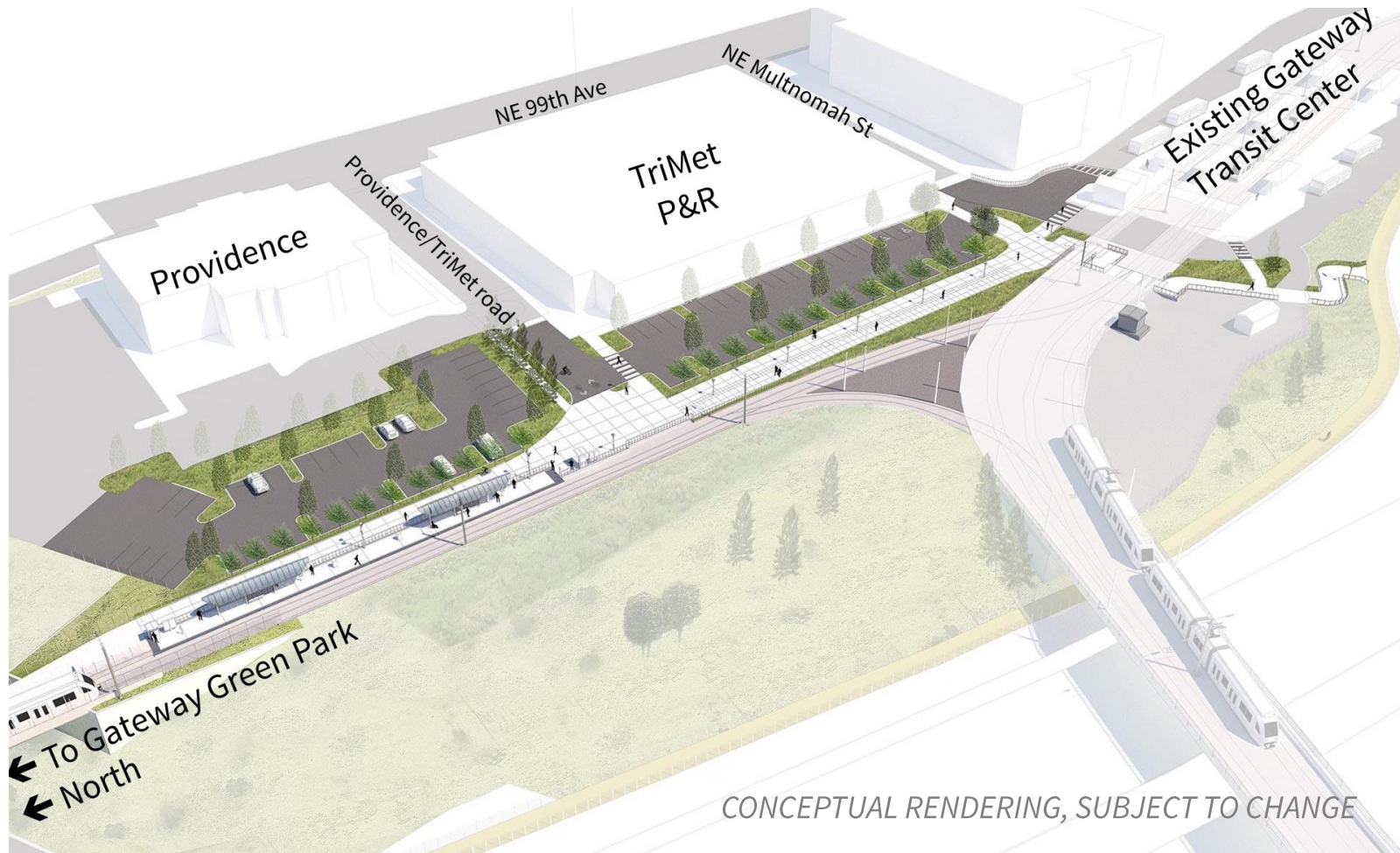
# Gateway Area

Diagram of new light rail second track



# Gateway Area

Aerial view of new Red Line (in-bound only) station, the existing Gateway station and the path connecting the two



# Gateway Area

Aerial view of the new inbound light rail station, multi-use path, and Providence parking lot.



CONCEPTUAL RENDERING, SUBJECT TO CHANGE



# Gateway Area

New light rail and multiuse path overpass over I-84



# Gateway Area

Aerial view looking south toward the multi-use path and Gateway Green light rail overcrossing



# Portland Airport

Light Rail Station at Portland International Airport



CONCEPTUAL RENDERING, SUBJECT TO CHANGE

# Design

AS OF SPRING 2021

**40**

firms have worked the on project

**30**

firms are based in the region

**24**

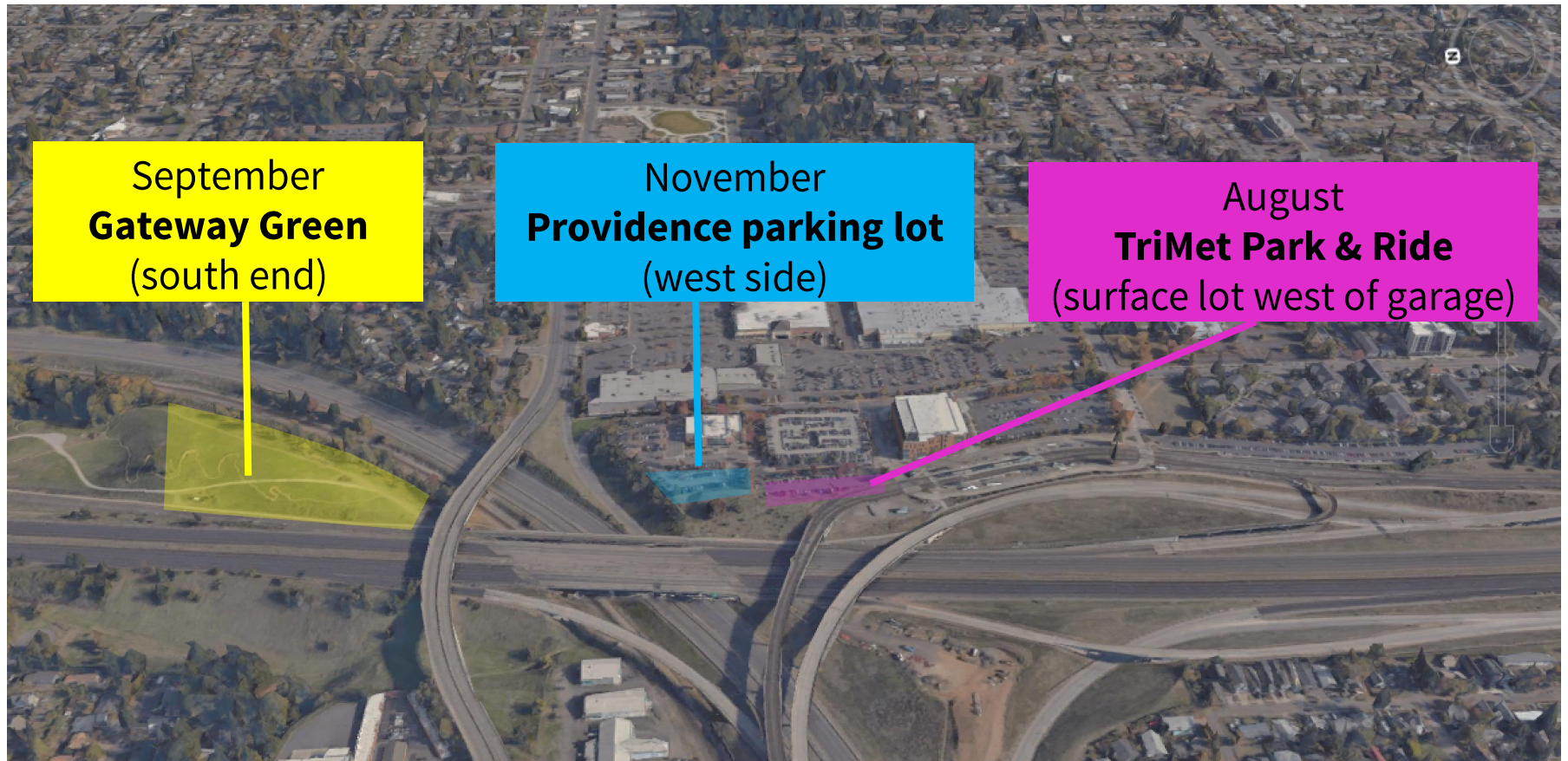
are certified DBE and Minority Business  
Enterprise and Women Business  
Enterprise firms

**19%**

of project design work has been awarded  
to DBE firms

# Gateway Green and Parking Closures

Starting summer 2021 through late 2023



September  
**Gateway Green**  
(south end)

November  
**Providence parking lot**  
(west side)

August  
**TriMet Park & Ride**  
(surface lot west of garage)

# TriMet's Construction Ethic

- Safety
- Minimize impacts to neighbors while maximizing construction efficiencies
- Community Affairs staff – liaison for neighbors
  - Gather information about access, operational needs
  - Collaborate with contractor to plan and adjust construction activities
  - Frequent communications; what to expect in advance; on-call 24/7

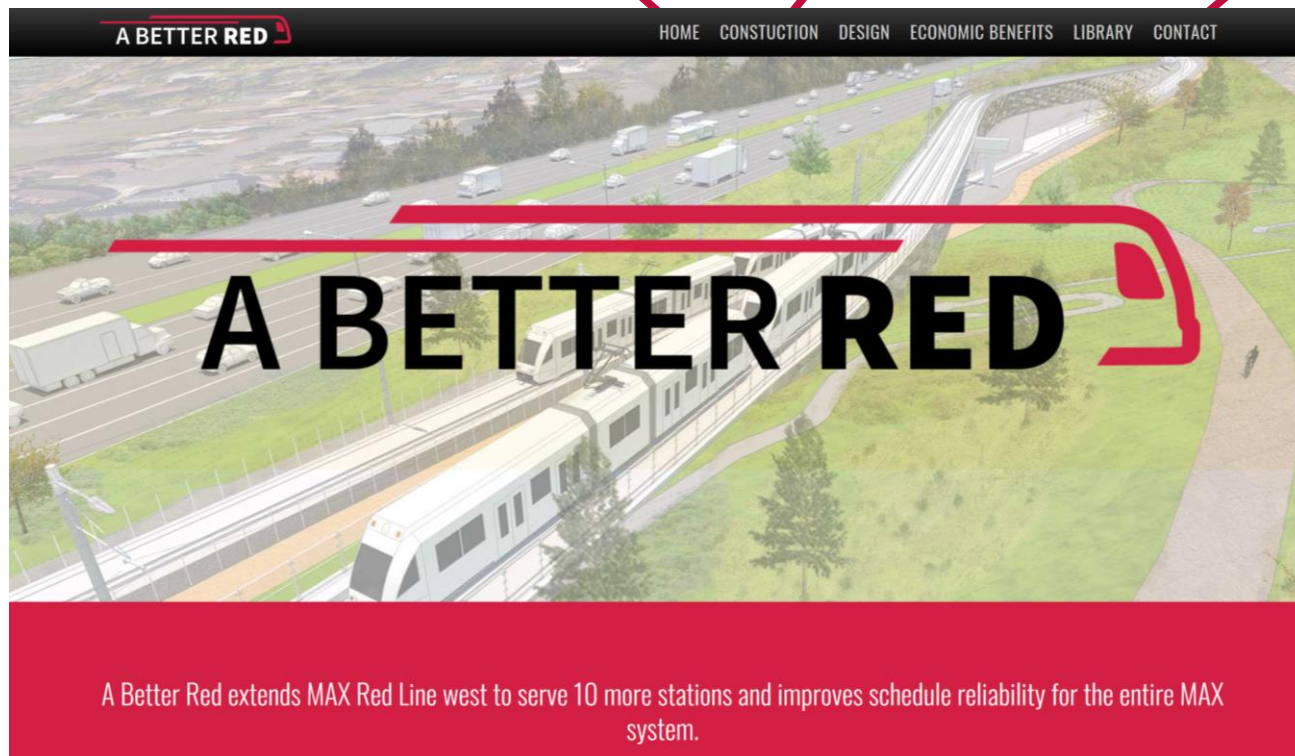


# trimet.org/betterred

**HOME:**  
Video with  
Gateway flyover

**CONSTRUCTION:**  
Weekly updates

**CONTACT:**  
Sign up for email  
updates



# What to Expect During construction

- MAX service interruptions, with shuttle buses (6)
- Lane closures, including nights on I-84
- Occasional closure of I-84 eastbound Exit 7–Halsey
- Weekend closures of I-84 (2)
- Night closures of Westbound I-84 (1-3 weeks)
- Daytime pile driving adjacent to I-84
- Night and weekend construction
- Partial parking and park closures
- Multi-use path impacts





# Comments & Questions?

[trimet.org/BetterRed](https://trimet.org/BetterRed)

Email: [BetterRed@trimet.org](mailto:BetterRed@trimet.org)

Phone: 503.962.2150

Libby Winter

Email: [WinterLi@trimet.org](mailto:WinterLi@trimet.org)

Cell: 503.983.3930